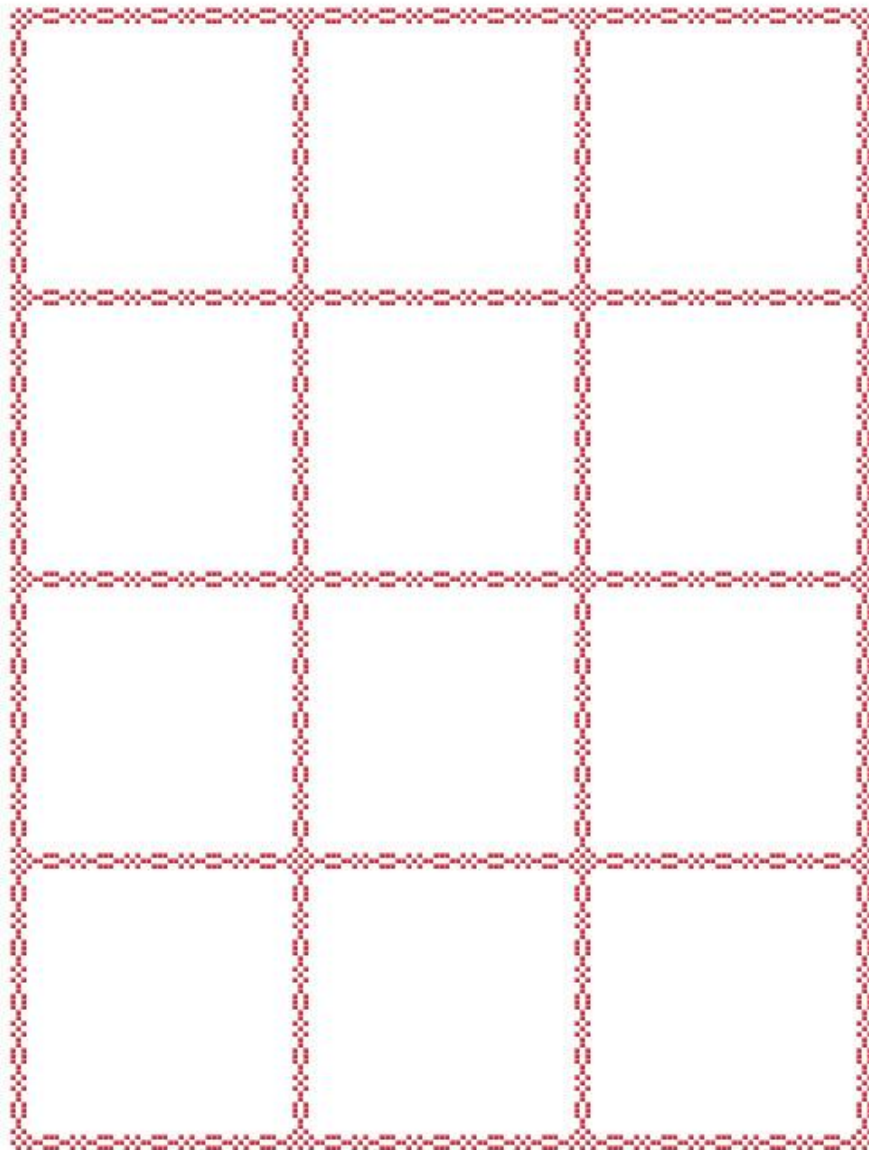
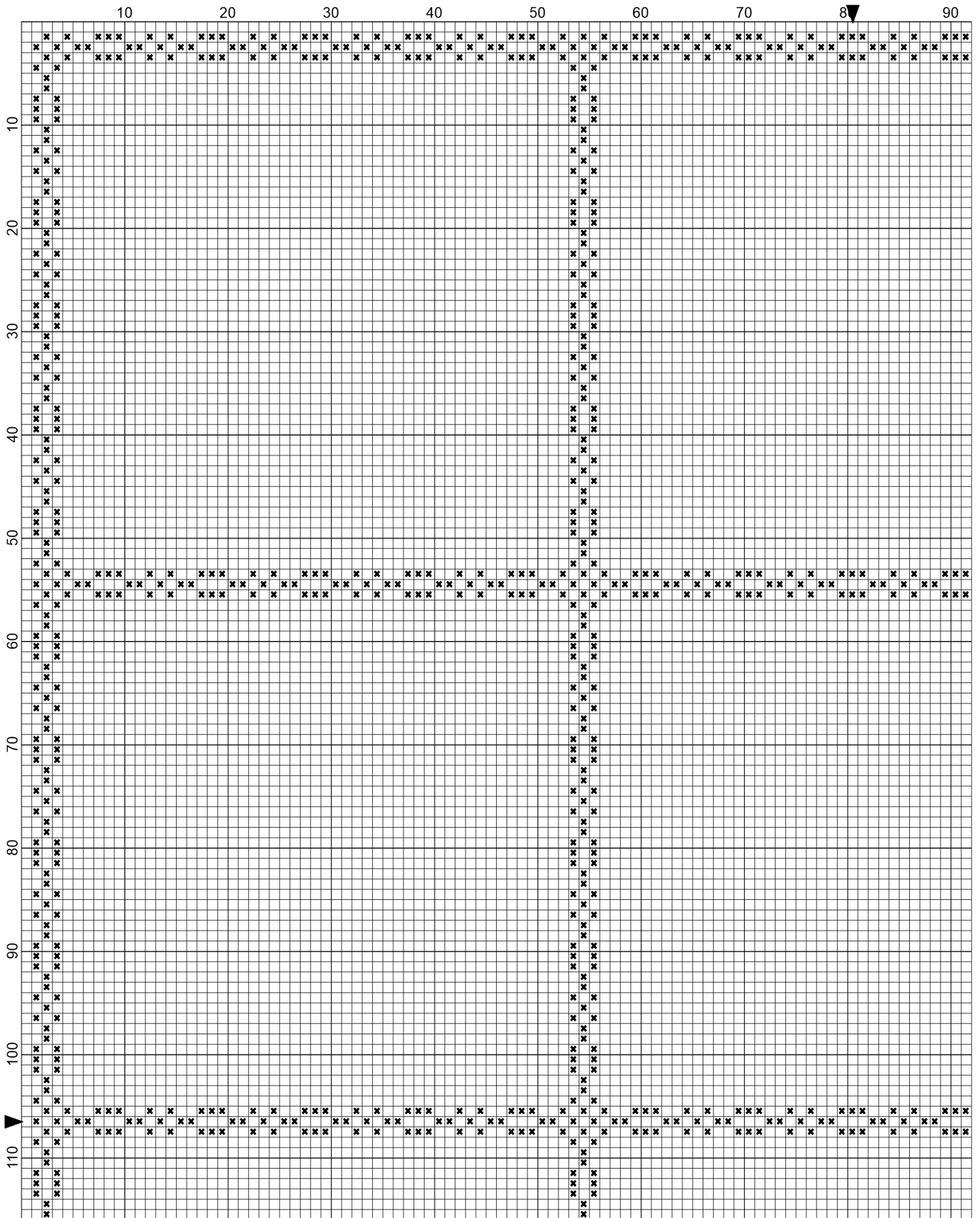


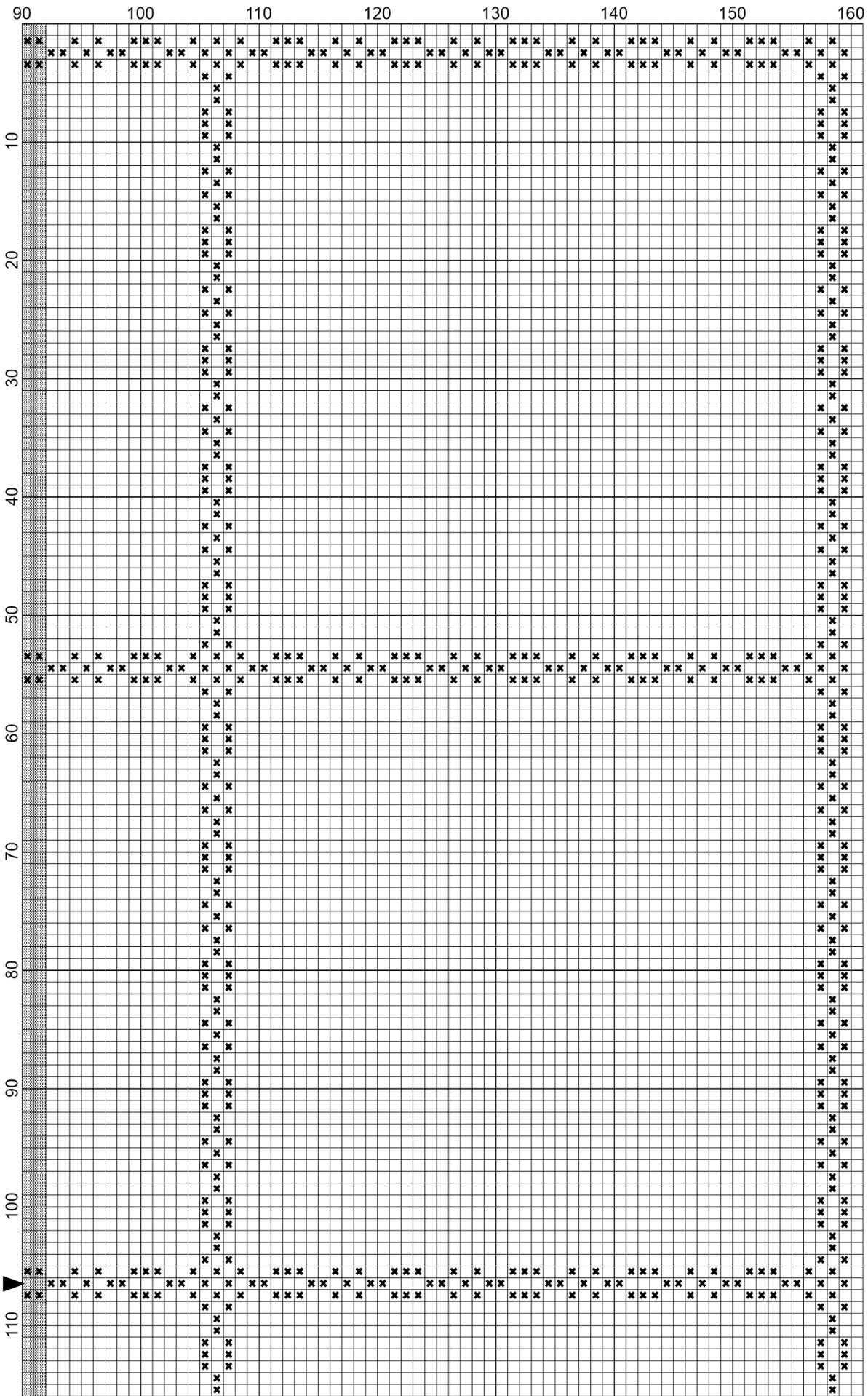
Stitching the Night Away

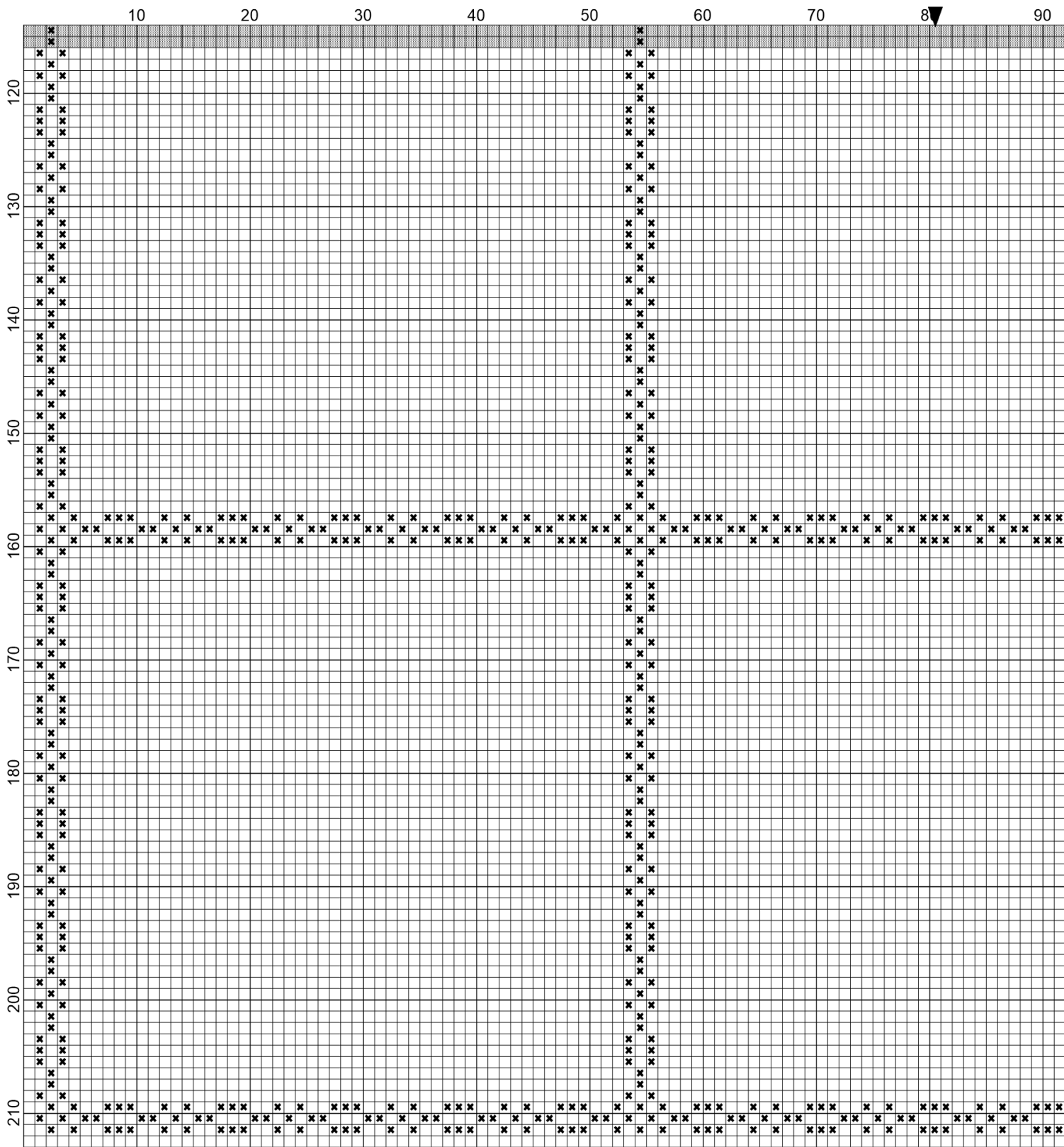
2019 Quilt Block Sampler Mystery Stitch-a-Long
BORDER ONLY

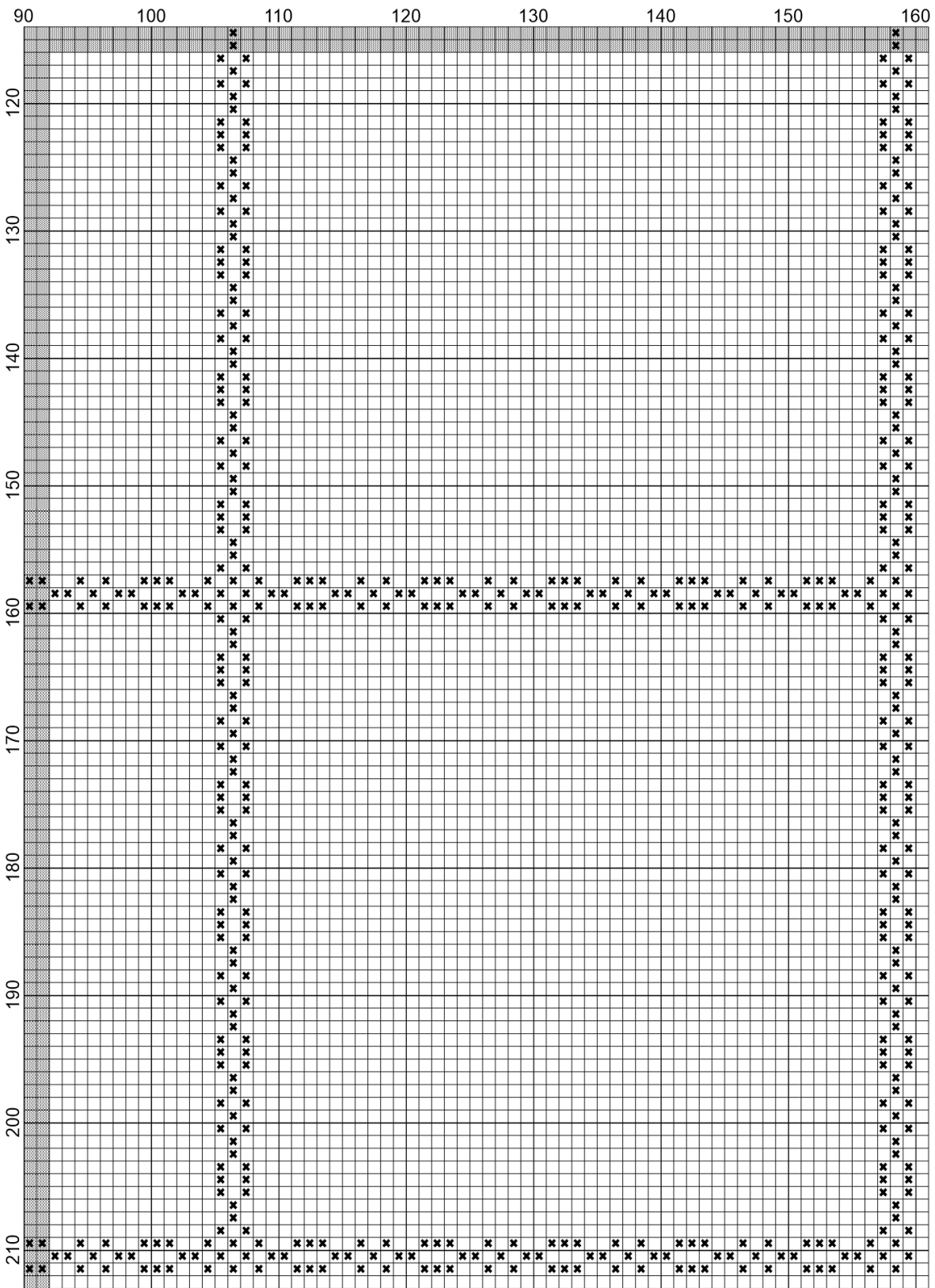
Main SAL Page: <https://www.stitchingthenightaway.com/2019-sal/>











The pattern size is 161 wide X 213 high. The pattern is all whole stitches and blackwork (a.k.a backstitch), so you can use any fabric type that you prefer. To calculate your fabric size you can use the [free cross stitch fabric calculator](#) on the site.

Pattern release schedule: There will be a block of the pattern released each month on or before the 7th of the month. You'll find the downloads on [the main SAL page](#) each month. You can also sign up there for the newsletter to receive email notifications and/or join us in [the Stitching the Night Away Facebook group](#).

Colors: The pattern is being released in a single color for the sake of simplicity, but of course you can use as many colors as you'd like. Whatever colors and fabric you choose, have fun and enjoy your stitching 😊

Social: I definitely encourage you to share your progress and stitching on social media, blogs, and pretty much anywhere 😊

On **Instagram** let's use hashtag **#stitchingthenightawaysal** as part of the captions and hashtag strings so we can find each other and give each other kudos and encouragement.

On **Facebook**, you can tag [the Stitching the Night Away page](#) - or- you are absolutely welcome to join us in the Stitching the Night Away Facebook [group](#) to share your progress and chat about stitching as much you'd like. We'd love to have you 😊

I admit that I don't get over to **Twitter** very often these days, but if you're sharing there please do tag me @[CraftStitching](#) so I can retweet you!

I look forward to seeing your finished project!



Loretta Oliver

